

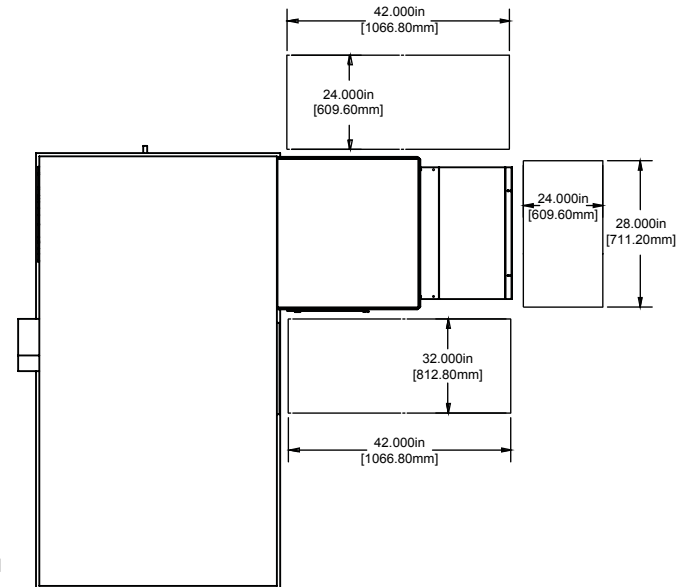
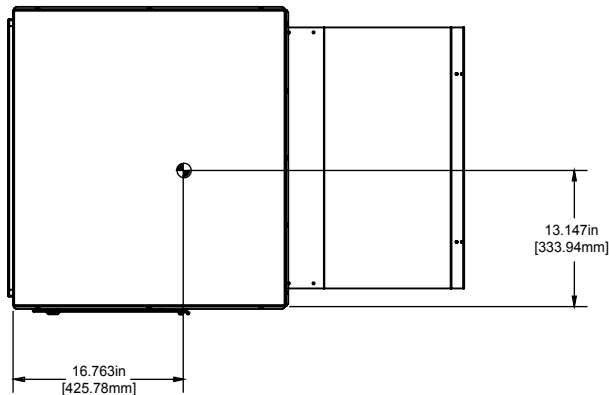
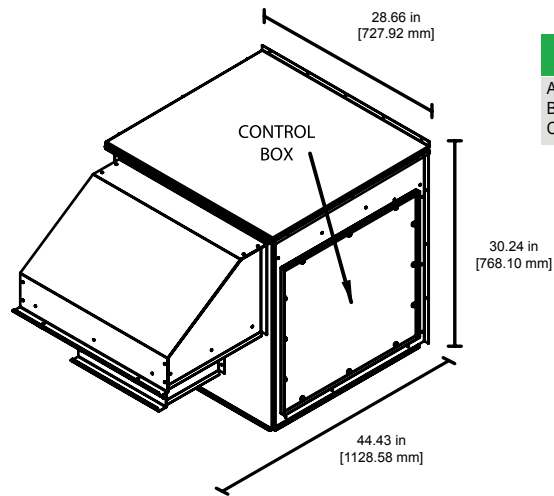


| | | | |
|---|------------------|--------------|-----------------|
| Weight | 275 lbs [125 kg] | | |
| ERV for York Units Listed Below | | | |
| SUN 36 ZR/XP/DJ/ZJ 036,048,060; ZF/DR/DM/DF/DH/DCG/DCE 036,048,060,072 | | | |
| Power Requirements | | | |
| UNIT | FLA | MCA | MOP |
| SUN36 IAQ 208 V, 1ph / 3ph | 2.25 | 2.82 | 6.58 |
| SUN36 IAQ 230 V, 1ph / 3ph | 2.04 | 2.55 | 5.95 |
| SUN36 IAQ 460 V, 3 ph | 1.02 | 1.27 | 2.98 |
| Ver. # | 1.0.0 | Date: | 10.31.13 |

EM * - * - * * * * * - *

| | | | |
|--|-----------------|--|-----------------------------|
| size | unit/ton | voltage | control |
| A - IAQ LOW B - IAQ STD C - IAQ HIGH | SUN36 | E - 208 VAC, 1 Φ F - 208 VAC, 3 Φ G - 230 VAC, 1 Φ H - 230 VAC, 3 Φ K - 460 VAC, 3 Φ | 0 - ELECTRO MECH A - IAQ |

| | | | |
|--|---|--|--|
| wheel | disconnect | maintenance indicator | options |
| A - TOTL ENTHLPY B - SENSIBLE ONLY C - PURGE | 0 - NO DISCONNECT A - 240 V NON FUSED B - 240 V FUSED C - 600 V NON FUSED D - 600 V FUSED | 0 - NO INDICATORS A - DIRT FILT INDIC | 0 - NO OPTIONS C - BUILDING PRESS D - FROST PROTECT E - HUMIDITY SENS F - BACNET |

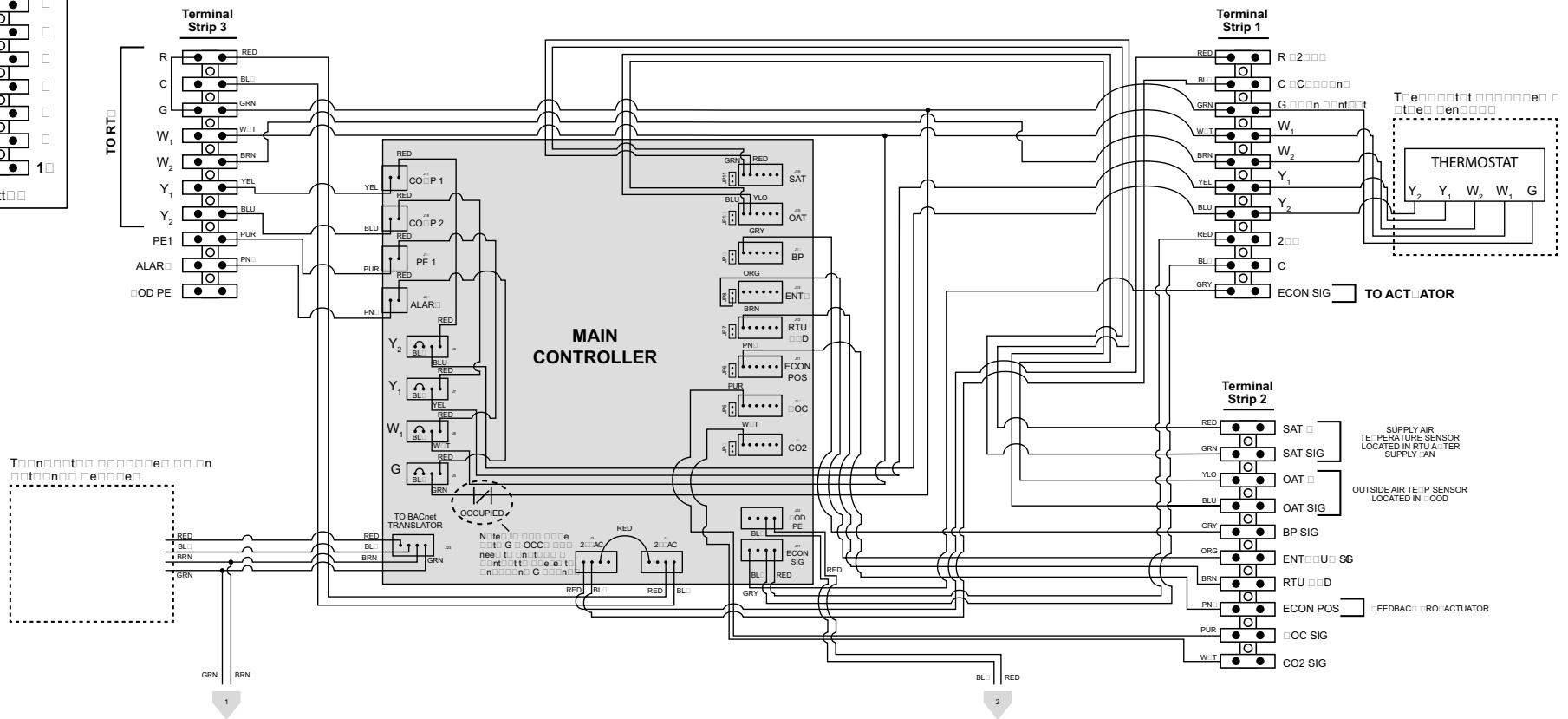
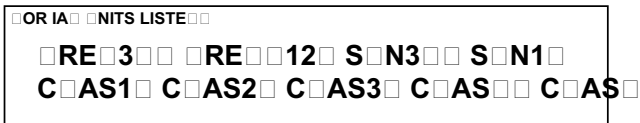
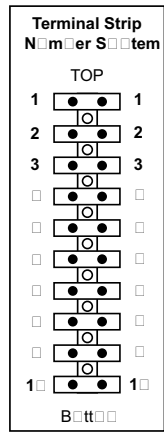


*Units designed for vertical return
** No supply blower

Wiring Diagram - Fixed Speed (pg 1 of 2)

ER □ IRIN □ IA □ RAM □ i □ e □ pee □ NON EC □ LO □ ER □

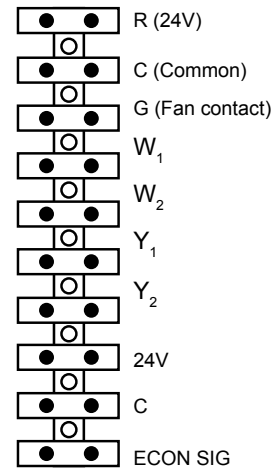
2 □ □ 5 □ 2 □ 1 □ □ 1 □ 8



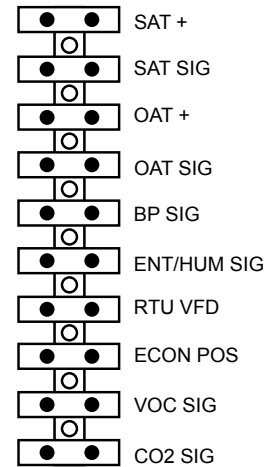
Technical Detail - Terminal Strip & I/O (page 1 of 2)

| PIN | NAME | IN / OUT | TYPE |
|-------|-----------------|----------|--------------|
| T1-1 | R 24V | INPUT | LINE VOLTAGE |
| T1-2 | C (COMMON) | INPUT | LINE VOLTAGE |
| T1-3 | G (FAN CONTACT) | INPUT | DIGITAL |
| T1-4 | W1 | INPUT | DIGITAL |
| T1-5 | W2 | INPUT | JUMPER |
| T1-6 | Y1 | INPUT | DIGITAL |
| T1-7 | Y2 | INPUT | DIGITAL |
| T1-8 | 24V | INPUT | LINE VOLTAGE |
| T1-9 | C | INPUT | LINE VOLTAGE |
| T1-10 | ECON SIG | INPUT | ANALOG 0-10V |
| | | | |
| T2-1 | SAT + | INPUT | ANALOG 0-10V |
| T2-2 | SAT SIG | INPUT | ANALOG 0-10V |
| T2-3 | OAT + | INPUT | ANALOG 0-10V |
| T2-4 | OAT SIG | INPUT | ANALOG 0-10V |
| T2-5 | BP SIG | INPUT | ANALOG 0-10V |
| T2-6 | ENT/HUM SIG | INPUT | ANALOG 0-10V |
| T2-7 | RTU VFD | INPUT | ANALOG 0-10V |
| T2-8 | ECON POS | INPUT | ANALOG 0-10V |
| T2-9 | VOC SIG | INPUT | ANALOG 0-10V |
| T2-10 | CO2 SIG | INPUT | ANALOG 0-10V |

Terminal Strip 1



Terminal Strip 2



* Any 0-10V signal can be modified to be a 4-20 mA signal. See instructions for how to make this modification.

Technical Detail - Terminal Strip & I/O (page 2 of 2)

| PIN | NAME | IN / OUT | TYPE |
|-------|--------|----------|--------------|
| T3-1 | R | OUTPUT | LINE VOLTAGE |
| T3-2 | C | OUTPUT | LINE VOLTAGE |
| T3-3 | G | OUTPUT | DIGITAL |
| T3-4 | W1 | OUTPUT | DIGITAL |
| T3-5 | W2 | OUTPUT | JUMPER |
| T3-6 | Y1 | OUTPUT | DRY CONTACT |
| T3-7 | Y2 | OUTPUT | DRY CONTACT |
| T3-8 | PE1 | OUTPUT | DRY CONTACT |
| T3-9 | ALARM | OUTPUT | DRY CONTACT |
| T3-10 | MOD PE | OUTPUT | ANALOG 0-10V |

* Any 0-10V signal can be modified to be a 4-20 mA signal. See instructions for how to make this modification.

